

**AMPH Antibody (Center)**  
**Affinity Purified Rabbit Polyclonal Antibody (Pab)**  
**Catalog # AP19926C****Specification**

---

**AMPH Antibody (Center) - Product Information**

Application	WB,E
Primary Accession	<a href="#">P49418</a>
Other Accession	<a href="#">O08838</a> , <a href="#">Q7TQF7</a> , <a href="#">NP_647477.1</a>
Reactivity	Human
Predicted	Mouse, Rat
Host	Rabbit
Clonality	Polyclonal
Isotype	Rabbit IgG
Calculated MW	76257
Antigen Region	140-168

**AMPH Antibody (Center) - Additional Information****Gene ID** 273**Other Names**

Amphiphysin, AMPH, AMPH1

**Target/Specificity**

This AMPH antibody is generated from rabbits immunized with a KLH conjugated synthetic peptide between 140-168 amino acids from the Central region of human AMPH.

**Dilution**

WB~~1:1000

E~~Use at an assay dependent concentration.

**Format**

Purified polyclonal antibody supplied in PBS with 0.09% (W/V) sodium azide. This antibody is purified through a protein A column, followed by peptide affinity purification.

**Storage**

Maintain refrigerated at 2-8°C for up to 2 weeks. For long term storage store at -20°C in small aliquots to prevent freeze-thaw cycles.

**Precautions**

AMPH Antibody (Center) is for research use only and not for use in diagnostic or therapeutic procedures.

**AMPH Antibody (Center) - Protein Information****Name** AMPH

**Synonyms** AMPH1

**Function** May participate in mechanisms of regulated exocytosis in synapses and certain endocrine cell types. May control the properties of the membrane associated cytoskeleton.

**Cellular Location**

Cytoplasmic vesicle, secretory vesicle, synaptic vesicle membrane; Peripheral membrane protein; Cytoplasmic side Cytoplasm, cytoskeleton

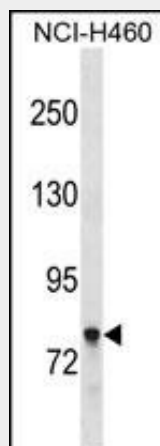
**Tissue Location**

Neurons, certain endocrine cell types and spermatocytes

**AMPH Antibody (Center) - Protocols**

Provided below are standard protocols that you may find useful for product applications.

- [Western Blot](#)
- [Blocking Peptides](#)
- [Dot Blot](#)
- [Immunohistochemistry](#)
- [Immunofluorescence](#)
- [Immunoprecipitation](#)
- [Flow Cytometry](#)
- [Cell Culture](#)

**AMPH Antibody (Center) - Images**

AMPH Antibody (Center) (Cat. #AP19926c) western blot analysis in NCI-H460 cell line lysates (35ug/lane). This demonstrates the AMPH antibody detected the AMPH protein (arrow).

**AMPH Antibody (Center) - Background**

This gene encodes a protein associated with the cytoplasmic surface of synaptic vesicles. A subset of patients with stiff-man syndrome who were also affected by breast cancer are positive for autoantibodies against this protein. Alternate splicing of this gene results in two transcript variants encoding different isoforms. Additional splice variants have been described, but their full length sequences have not been determined. A pseudogene of this gene is found on chromosome 11.

**AMPH Antibody (Center) - References**

He, P., et al. Amino Acids 38(4):1209-1218(2010)  
Liu, L., et al. Protein Pept. Lett. 17(2):246-253(2010)  
Hou, T., et al. J. Mol. Biol. 376(4):1201-1214(2008)  
Zhou, P., et al. Biopolymers 90(6):792-802(2008)  
Ballif, B.A., et al. Mol. Cell Proteomics 3(11):1093-1101(2004)